

TEN BELLEVUE TERRACE,
WEST PERTH, WESTERN AUSTRALIA.

TEN BELLEVUE

LUXURY RESIDENCES

“EVERYTHING ALWAYS
STARTS WITH THE SITE,
AND THERE IS NO DOUBT
THAT TEN BELLEVUE
TERRACE IS AN ICONIC SITE”.

“it’s an opportunity to translate the considered design and contemporary luxury of our award-winning custom homes to ultra-luxury living. At the same time, we aim to create a building with the architectural presence to honour this significant site. This makes Ten Bellevue Terrace one of the most inspiring projects Giorgi has ever been involved in.”

**CLAUDE GIORGI,
MANAGING DIRECTOR**

GIORGI ARCHITECTS & BUILDERS

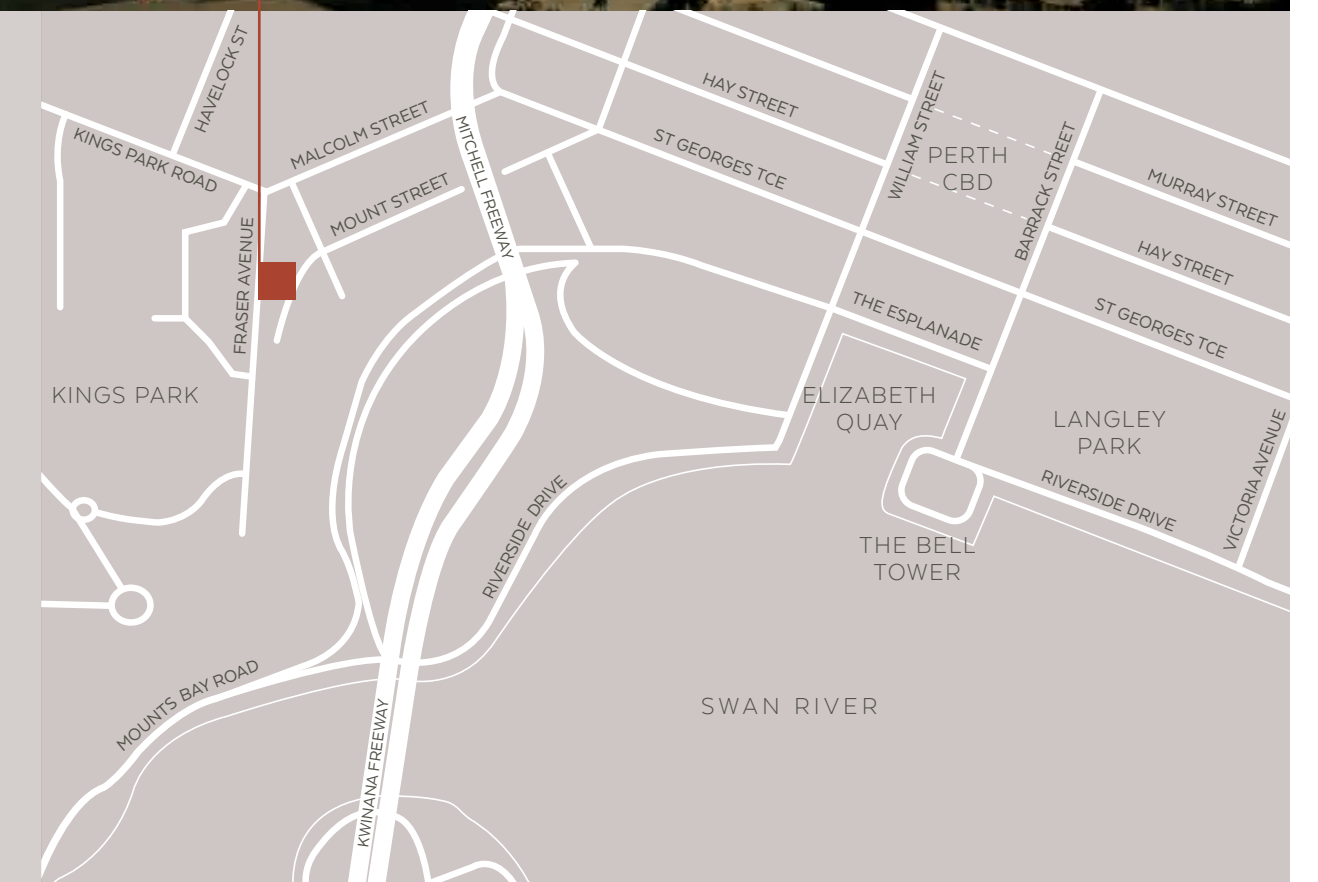


A SITE LIKE NO OTHER

TEN BELLEVUE
TERRACE,
WEST PERTH

IN BELLEVUE TERRACE, EVERYTHING
BEAUTIFUL ABOUT PERTH COMES TOGETHER
IN ONE SHIMMERING VISTA.

Kings Park, the Swan River, the city and the hills stage a daily light show of rhythms, moods and seasons viewed from nature's box seat. Bellevue Terrace has been the hilltop address of some of the city's most prominent citizens for over a century. Now the tradition lives on at Ten Bellevue Terrace – the last remaining site where you can acquire a new ultra-luxury residence in this historic street.



IT'S A PLACE OF EXQUISITE
BALANCE - ON THE EDGE
OF THE CITY YET RISING
ABOVE ITS HUSTLE.

Ten Bellevue Terrace perches majestically on the crest of the Mount Eliza escarpment in Kings Park, West Perth. To the east lie the panoramic 180-degree views of the Perth city skyline, Swan River and Darling Ranges that can never be built out. To the west and south lie the soaring tree-lined nature spaces and memorials of Kings Park.

ALFRESCO AND BALCONY AREA





A HOME LIKE NO OTHER

THE GIORGI ARCHITECT STUDIO
IS REDEFINING HIGH-END
LIVING WITH THE DESIGN OF
TEN BELLEVUE TERRACE.

The building presents an articulated sculptural facade that will stand as an enduring contribution to the Perth city skyline. Even more importantly, Giorgi's bespoke residential experience means each dwelling has a sense of space and liveability that feels more like a house than an apartment.

- Five full floor residences and one multi-level residence with swimming pool.
- Three bedrooms, all with ensuites, living room, family room, study, Miele kitchen with separate larder and preparation area, wine cellar, dining area, powder room, gallery, balconies and alfresco.
- Secure undercover parking for three cars.
- Elegant contemporary aesthetic with the exceptional quality and attention to detail for which Giorgi is renowned.

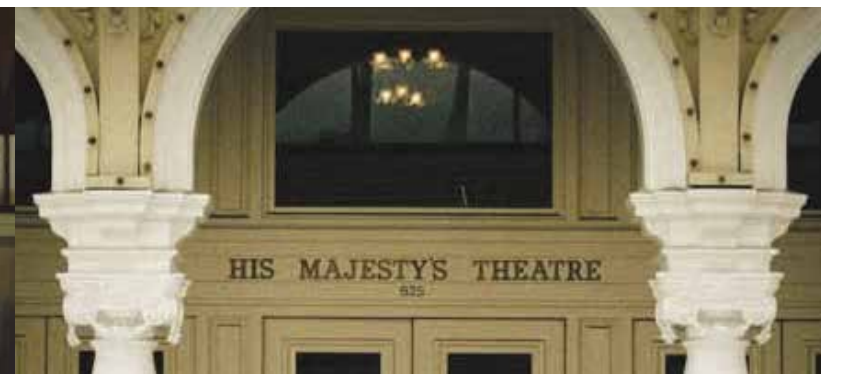
A NIGHT OUT AT A
FESTIVAL SHOW, CONCERT
OR SPORTING EVENT IS
MINUTES AWAY.

A LIFESTYLE LIKE NO OTHER

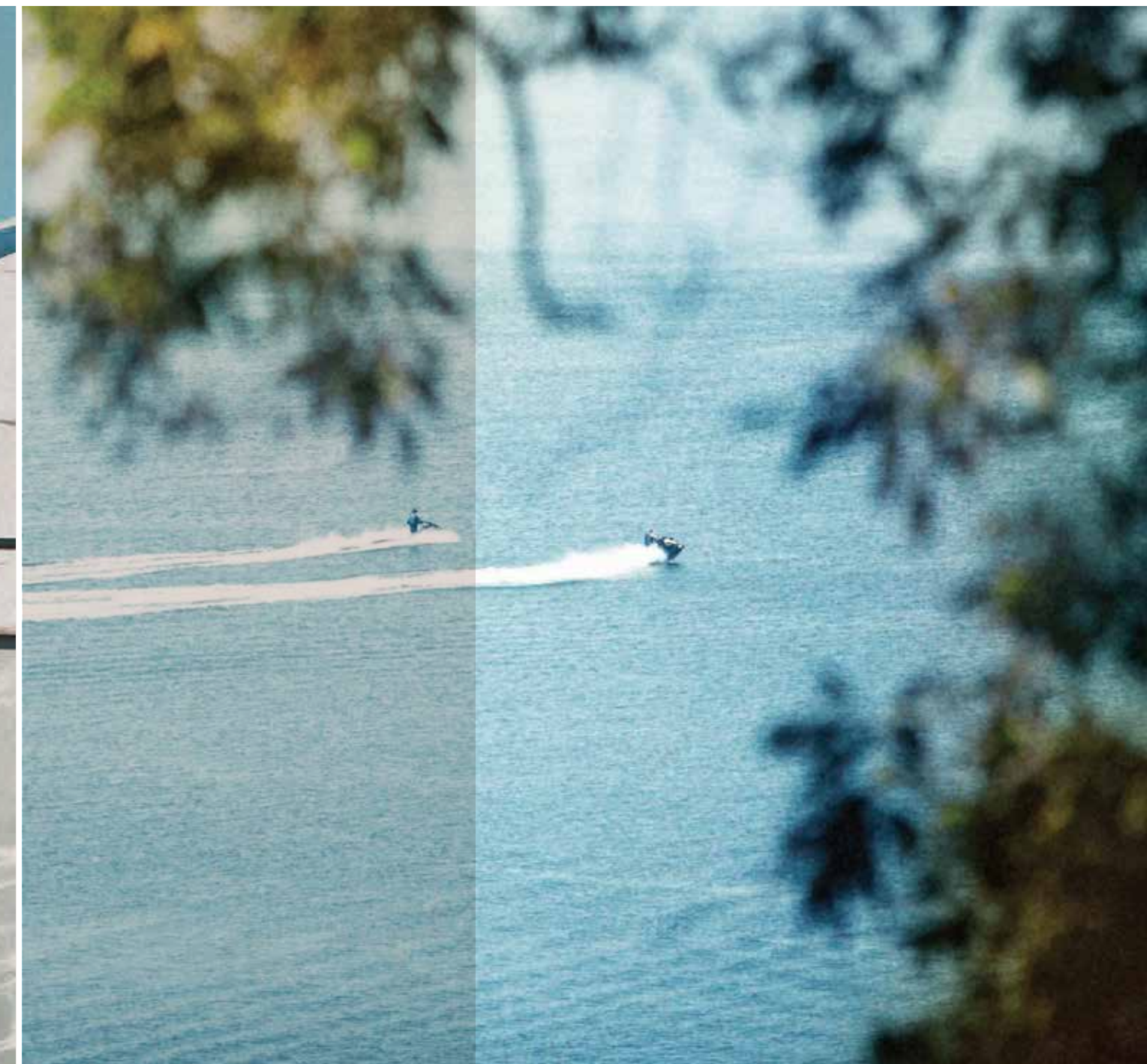


Perth's sophisticated city bar and restaurant scene serves up a tasting plate of culinary choices. Or stroll to your 'local' – the Botanical Cafe for coffee or Frasers for fine dining.

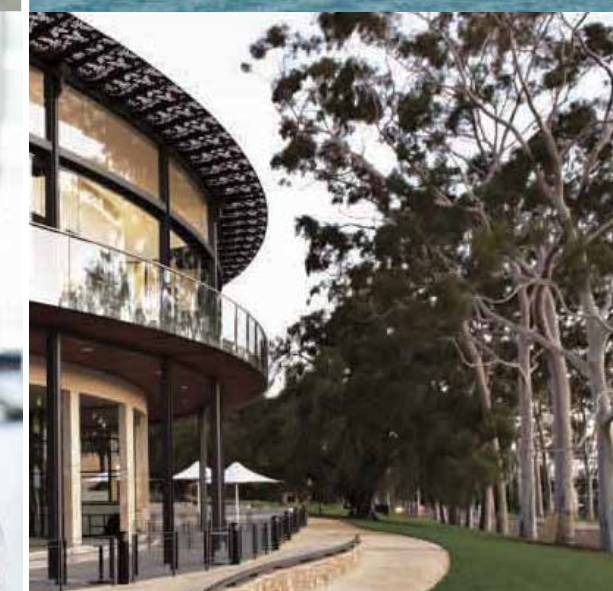
Retail therapy is elevated to an artform in the city shops. And when the annual fireworks set the sky ablaze, you and your guests will have a golden ticket to a VIP view.



WHEN YOU LIVE
BETWEEN CITY AND
PARK, MANY EVERYDAY
PLEASURES AWAIT.



Explore Kings Park on your morning walk or scale Jacobs Ladder with Perth's serious fitness buffs. Perth's premier sports facility, the Royal Kings Park Tennis Club, offers grass court tennis, squash courts, a heated swimming pool and a world-class gym, all only minutes away.

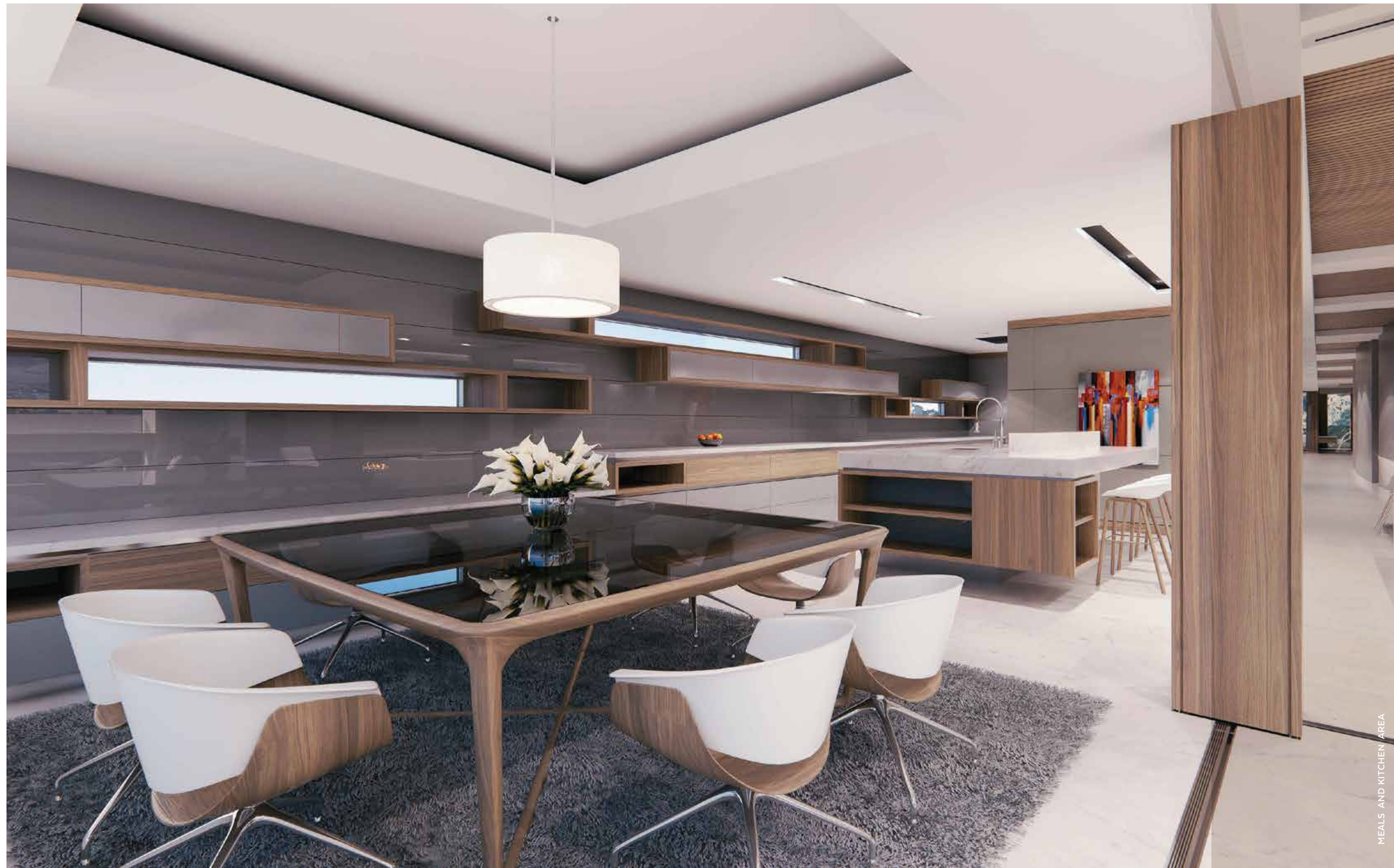


LUXURY LIVING REDEFINED

ENTER A PRIVATE HAVEN OF
CONTEMPORARY LUXURY. FLEXIBLE,
LIGHT-FILLED SPACES BLUR THE
LINES BETWEEN INDOORS AND
OUT, FRAMING CITY AND PARKLAND
VIEWS AT EVERY TURN.

DINING, WINE CELLAR AND LIVING AREA





THE GOURMET KITCHEN
FEATURES A SEPARATE LARDER
AND PREPARATION AREA WHILE
THE DINING AREA HAS ITS OWN
WINE CELLAR FOR EFFORTLESS
ENTERTAINING.

Every comfort for a refined modern lifestyle has been considered. A sleek gas fire welcomes guests to the living room. Fine cabinetry is seamlessly integrated into the interior architecture. Secret, room-dividing doors can be opened or closed to suit the occasion.

A PALETTE OF LUXURY FINISHES
INCLUDES THE TIMELESS NATURAL
WARMTH OF TIMBER DOORS AND
WINDOWS TOGETHER WITH AN
ELEGANT TEXTURAL INTERPLAY OF
STONE, METAL AND FABRIC.



LIVING AREA LOOKING TOWARDS KINGS PARK



MASTER BEDROOM AND ENSUITE

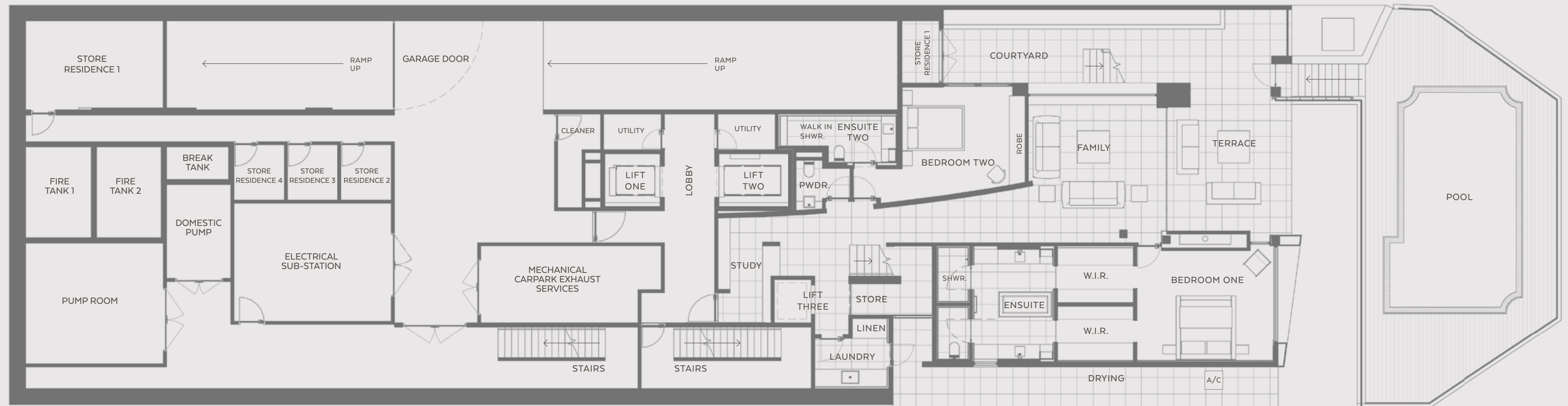


GIORGI UNDERSTANDS YOU HAVE YOUR OWN PERSONAL PREFERENCES AND OUR DESIGN TEAM WILL WORK WITH YOU TO CUSTOMISE THE SELECTIONS FOR YOUR NEW RESIDENCE.

G

RESIDENCE ONE GROUND LOWER

NORTHERN ELEVATION



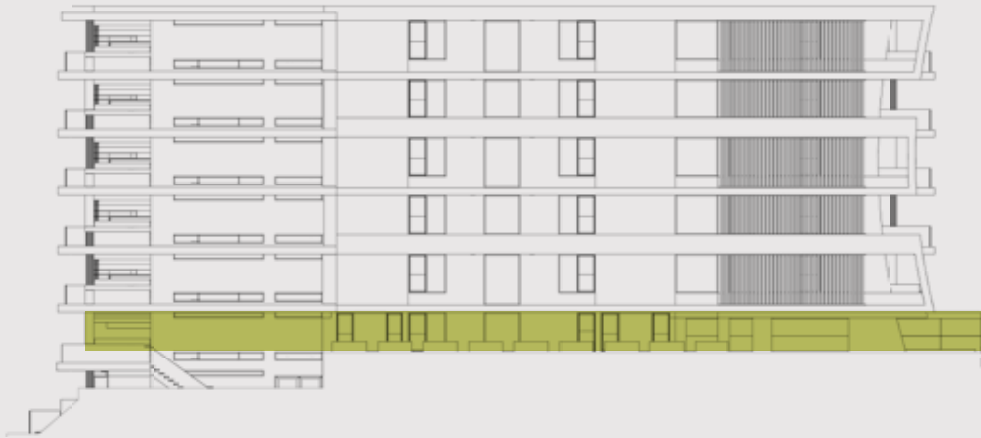
G

RESIDENCE ONE
GROUND UPPER

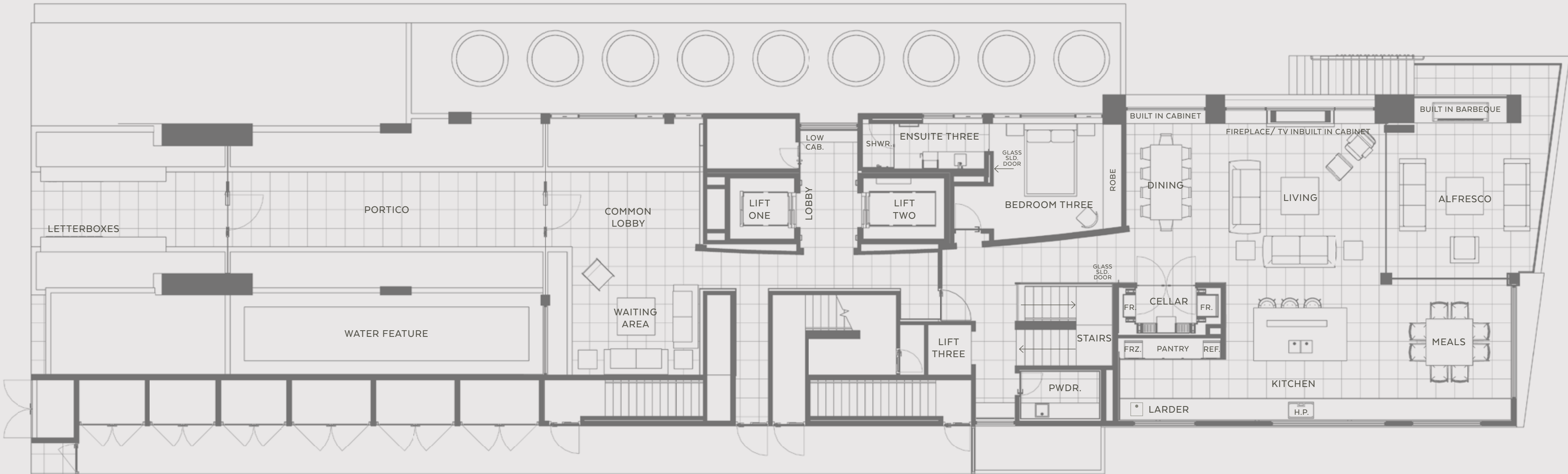
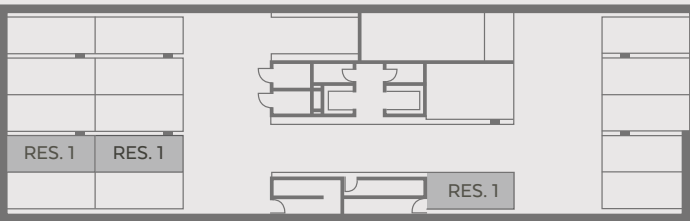
LOWER AND UPPER GROUND COMBINED

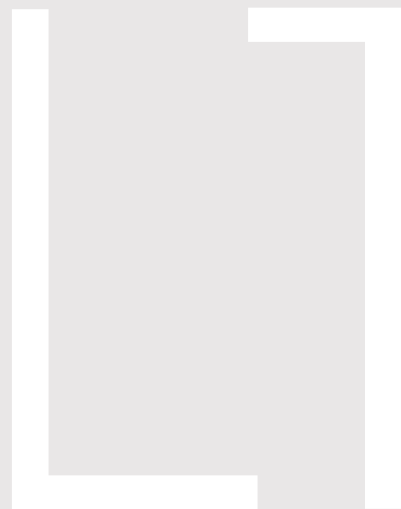
	INTERNAL	BALCONY & TERRACE	PARKING BAYS	STORE ROOMS	TOTAL
STRATA AREAS	315M ²	32M ²	46M ²	20M ²	413M ²
ARCHITECTURAL AREAS	341M ²	32M ²	46M ²	20M ²	439M ²

NORTHERN ELEVATION



BASEMENT CARPARK





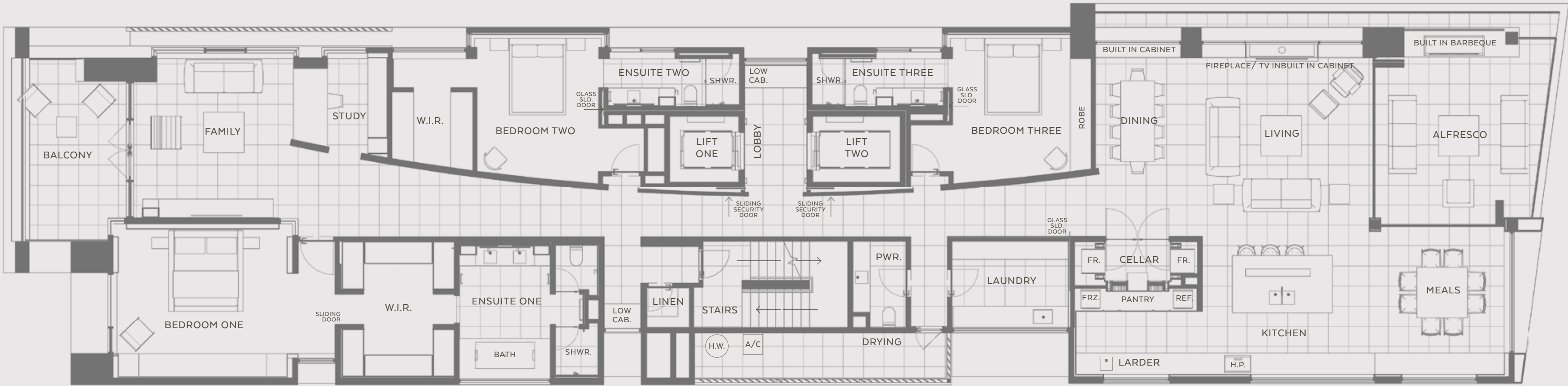
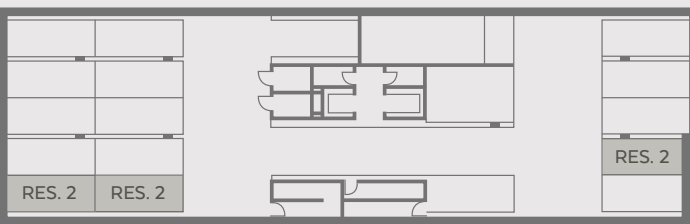
RESIDENCE TWO LEVEL ONE

	INTERNAL	BALCONIES	PARKING BAYS	STORE ROOM	TOTAL
STRATA AREAS	326M ²	52M ²	44M ²	4M ²	426M²
ARCHITECTURAL AREAS	358M ²	52M ²	44M ²	4M ²	458M²

NORTHERN ELEVATION



BASEMENT CARPARK



L2

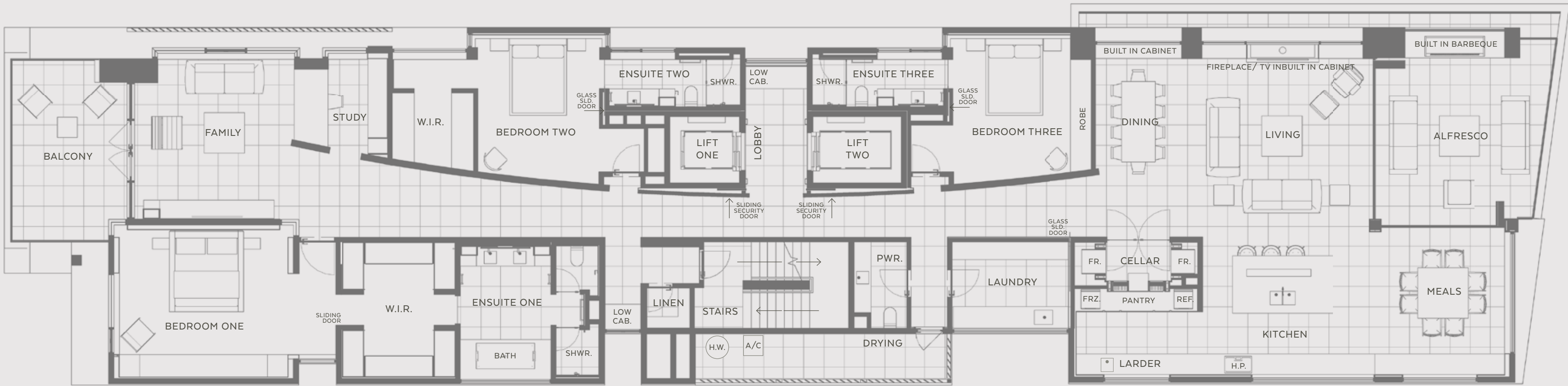
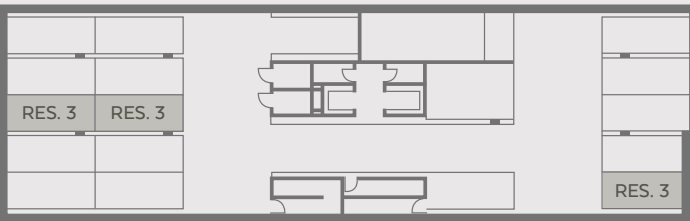
RESIDENCE THREE LEVEL TWO

	INTERNAL	BALCONIES	PARKING BAYS	STORE ROOM	TOTAL
STRATA AREAS	326M ²	54M ²	45M ²	4M ²	429M ²
ARCHITECTURAL AREAS	356M ²	54M ²	45M ²	4M ²	459M ²

NORTHERN ELEVATION



BASEMENT CARPARK



L3

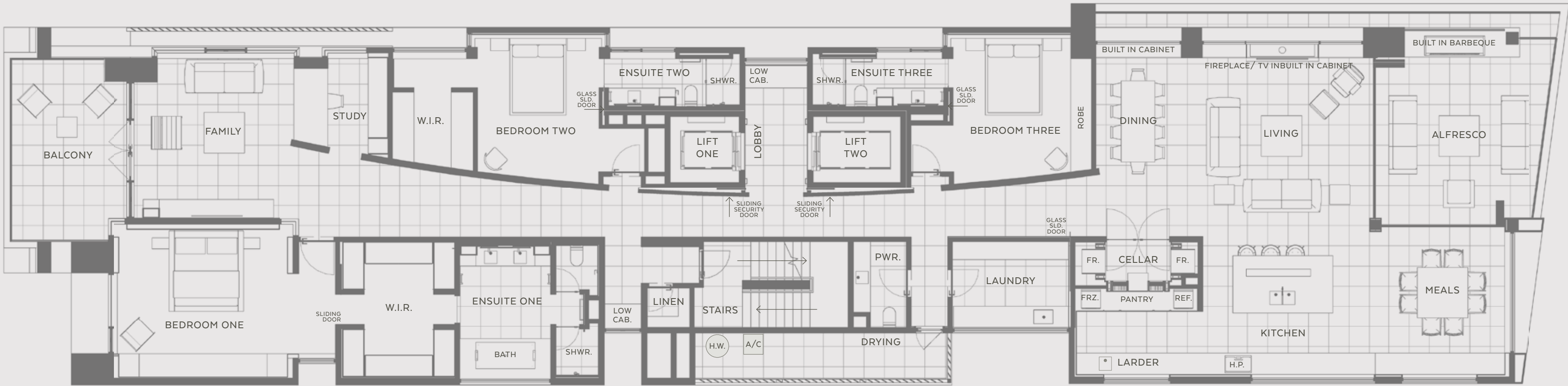
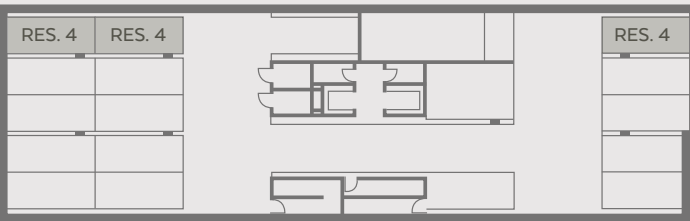
RESIDENCE FOUR LEVEL THREE

	INTERNAL	BALCONIES	PARKING BAYS	STORE ROOM	TOTAL
STRATA AREAS	326M ²	55M ²	47M ²	4M ²	432M²
ARCHITECTURAL AREAS	358M ²	55M ²	47M ²	4M ²	464M²

NORTHERN ELEVATION



BASEMENT CARPARK



L4

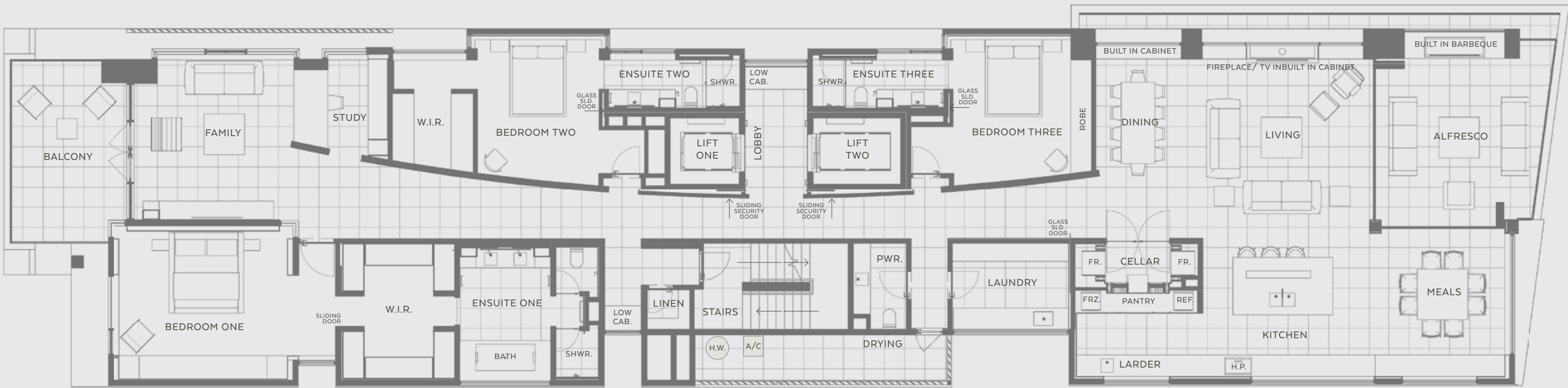
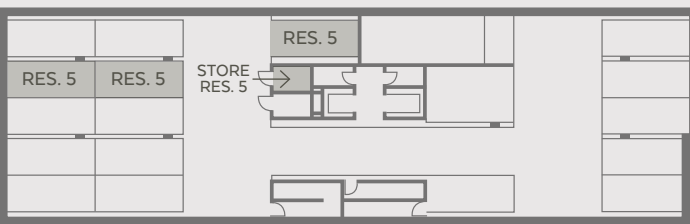
RESIDENCE FIVE LEVEL FOUR

	INTERNAL	BALCONIES	PARKING BAYS	STORE ROOM	TOTAL
STRATA AREAS	326M ²	55M ²	46M ²	4M ²	431M²
ARCHITECTURAL AREAS	356M ²	55M ²	46M ²	4M ²	461M²

NORTHERN ELEVATION



BASEMENT CARPARK



L5

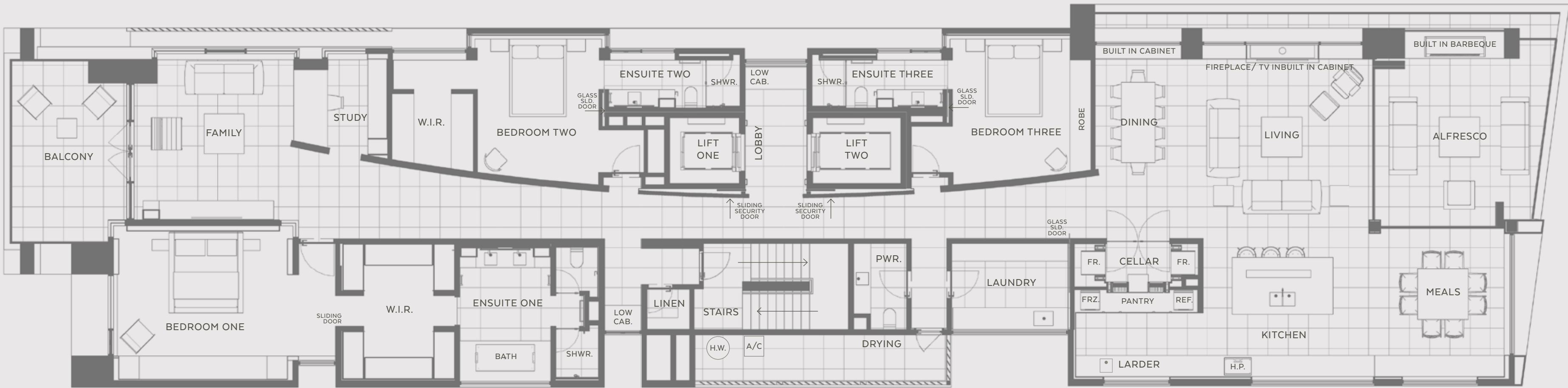
RESIDENCE SIX LEVEL FIVE

	INTERNAL	BALCONIES	PARKING BAYS	STORE ROOM	TOTAL
STRATA AREAS	326M ²	54M ²	55M ²	4M ²	439M²
ARCHITECTURAL AREAS	358M ²	54M ²	55M ²	4M ²	471M²

NORTHERN ELEVATION



BASEMENT CARPARK



SCHEDULE OF FINISHES

A SELECTION OF THE WORLD’S LEADING LUXURY APPLIANCES, FIXTURES AND FITTINGS HAS BEEN CURATED BY THE GIORGI DESIGN TEAM FOR THE RESIDENCES AT TEN BELLEVUE TERRACE.

Miele

The fully integrated entertainer’s kitchen with adjacent larder, preparation area and wine cellar is equipped with premium Miele appliances, which set the tone for the exceptionally high-end specification throughout.

Top-of-the-range Miele appliances include:

- Five zone induction cooktop.
- Built-in rangehood.
- Oven.
- Steam oven.
- Microwave oven.
- Plate warmer.
- Integrated dishwasher.
- Integrated refrigerator and freezer.
- Wine conditioner.

COMMON AREAS

LIFTS

- Two separate lifts, 13 person and 17 person (including internal quality fit out) Nom. 600x600 stone or select timber flooring.
- Custom wall linings with either stone, timber veneer, lacquer and or fabric finishes also external treatment.

PORTICO

- Architecturally landscaped.
- Water feature.
- 600x600 stone tiling.
- Plasterboard and feature timber battened ceilings at ~2400-2660 affl.

LOBBY AREA

- Architecturally landscaped.
- 600x600 stone tiling.
- Plasterboard and feature timber battened ceilings at ~2400-2660 affl.
- Feature timber, stone and or fabric feature wall linings.

GARDENS

- Architecturally landscaped garden areas.

PARKING

- 3 car bays per residence, as allocated on plans.
- Secure access.

SECURITY

- Secure gate access to underground parking.
- Secure access to common areas from garage and street.
- Secure access to individual lift lobbies.

RESIDENCES 2-6

PRIVATE LOBBY

- Nom. 600x600 stone tile or select timber flooring.
- Timber, stone and fabric feature wall linings.
- Plasterboard ceilings @ ~2400-2700 affl.
- Low custom cabinet.
- Cavity slide away security doors.
- Custom framed timber window with built in blind recess and blind.

LIVING / DINING ROOM

- Nom. 600x600 stone tile or select timber flooring.
- Plasterboard and feature timber battened ceilings at ~2660-2770 affl.
- Built in fireplace to living room.
- Custom wall cabinets with stone, timber veneer, lacquer and fabric finishes.
- 2 sets of stacking frameless glass doors off living/kitchen.
- Commercial grade powdercoat finished aluminium windows.
- Automated sheer blinds to lower slot windows, only at Dining and Living.

KITCHEN

- Nom. 600x600 stone tile or select timber flooring.
- Plasterboard ceiling @ ~2400 affl.
- Custom kitchen cabinets with stone, timber, veneer and lacquer finishes with glass splashbacks.
- Premium Miele appliances throughout, including oven, steam oven, fully integrated dishwasher, 5 zone induction cooktop, built in rangehood, integrated refrigerator and freezer, wine conditioner, plate warmer, and microwave oven.
- Large discreet larder area with separate preparation sink.
- Double stainless steel sink to island.
- Filtered hot and cold instant water unit.
- Soft close draws and built in cutlery inserts.
- High quality taps and fixtures.
- Commercial grade powdercoat finish aluminium windows.

WINE CELLAR

- Nom. 600x600 stone tile or select timber flooring.
- Plasterboard ceiling @ ~2400 affl.
- Miele full size temperature controlled wine conditioner.
- Custom designed cellar.
- Frameless glass and timber door frame.

ALFRESCO

- Nom. 600x600 stone tile flooring.
- Plasterboard and feature timber battened ceilings @ ~2400-2770 affl
- Custom cabinetry.
- Custom stainless steel inset barbecue with separate wok burner, grille and flat plate.
- Custom overhead stainless steel rangehood.
- Frameless glass balustrading.

STUDY

- Nom. 600 x600 stone tile or select timber flooring.
- Plasterboard ceiling @ ~ 2400 affl.
- Custom study desk and wall unit.
- Feature fabric and or timber wall lining.
- Custom timber framed window with Aneeta double hung sashes and built in blind recess with blind.

FAMILY

- Nom. 600x600 stone or select timber flooring.
- Plasterboard and feature timber battened ceilings @ ~2660-2770 affl.
- Custom wall cabinet.
- Feature fabric wall lining.
- Custom timber framed doors/windows with Aneeta double hung sashes.
- Built in blind recesses with automated blinds.

GALLERY

- Nom. 600x600 stone tile or select timber flooring.
- Feature curved wall.
- Plasterboard and feature timber batten ceilings @ ~2400-2770 affl.
- Cavity sliding door adjoining cellar.

BALCONY

- Nom. 600x600 stone tile flooring.
- Frameless glass balustrading.

SCHEDULE OF FINISHES

RESIDENCES 2-6

BED 1

- Carpet flooring with underlay.
- Feature bedhead and entry vestibule wall with fabric panelling.
- Plasterboard and feature timber batten ceiling @ ~ 2400-2600 affl.
- Bedhead wall, commercial frame aluminium powdercoat finished window frames.
- Built in blind recess with automated blinds.
- Custom timber joinery to bedroom corner window and vestibule with aneeta double hung sashes.

BED 1 ENSUITE

- Nom. 600 x600 stone tile flooring with in floor heating.
- Plasterboard ceiling @ ~ 2400 affl.
- Timber veneer panelling to southern bath wall, elsewhere full height wall tiling.
- Custom vanity cabinet.
- Commercial frame aluminium finish powdercoat window frames.
- Built in blind recess with automated blinds.
- Heated towel rails.
- Wall rail shower and ceiling rose.
- Combined bidet and W.C. with-in wall cistern.
- Strip floor drain @ shower.
- High quality taps and fixtures.
- In-floor heating (electric).
- Tiled hob with built in bath.

BED 1 W.I.R.

- Carpet flooring with underlay.
- Plasterboard ceiling @ ~ 2400 affl.
- Custom W.I.R. cabinetry.
- Cavity sliding door.

BED 2 / BED 2 W.I.R.

- Carpet flooring with underlay.
- Plasterboard ceiling @ ~ 2400-2660 affl.
- Feature timber veneer and or fabric panelling to bedhead wall.
- Custom timber joinery to adjoining robe and Ensuite areas with Aneeta double hung sashes.
- Built in blind recesses with automated blinds.
- Custom W.I.R. cabinetry.

BED 2 ENSUITE

- Nom. 600 x600 stone tile flooring.
- Plasterboard ceiling @ ~2400 affl.
- Full height wall tiling.
- Custom vanity cabinet.
- Custom timber window frames with built in blind recess and automated blinds.
- Heated towel rail.
- Wall rail shower.
- Combined bidet and W.C. with in-wall cistern.
- Strip floor drain @ shower.
- High quality taps and fixtures.
- In floor heating (electric).
- In built cavity sliding door.

BED 3

- Carpet flooring with underlay.
- Plasterboard ceiling @ ~2400-2660 affl.
- Feature timber veneer and or fabric panelling to bedhead wall.
- Custom timber joinery to adjoining Ensuite areas with Aneeta double hung sashes and built in blind recesses with automated blinds.
- Custom robe cabinetry.

BED 3 ENSUITE

- Nom. 600 x600 stone tile flooring.
- Plasterboard ceiling @ ~2400 affl.
- Full height wall tiling.
- Custom vanity cabinet.
- Custom timber window frames with built in blind recess with automated blinds.
- Heated towel rail.
- Wall rail shower.
- W.C. with in-wall cistern.
- Strip floor drain @ shower.
- High quality taps and fixtures.
- In-floor heating (electric).
- In built cavity sliding door.

POWDER ROOM

- Nom. 600 x600 stone tile flooring.
- Plasterboard ceiling @ ~2400 affl.
- Full height wall tiling.
- Custom vanity cabinet.
- Combined bidet and W.C. with-in wall cistern.

LAUNDRY

- Nom. 600x600 stone tile flooring.
- Plasterboard ceiling @ ~2400 affl.
- Full height wall tiling.
- Custom laundry cabinets with provision only for washer and dryer.
- Stainless steel under-mount laundry trough.

LINEN

- Nom. 600x600 stone tile flooring.
- Plasterboard ceiling @ ~2400 affl.
- Built in shelving.

SERVICE COURT

- Nom. 200 x 200 ceramic floor tiles.
- Clothes lines for drying.

GENERAL

- LED lighting throughout.
- Individually controlled VRF air conditioning units to all bedrooms and main living areas.
- C-bus or similar lighting control.
- Security alarm system.
- Distribution of data, Foxtel, TV service connections only throughout Bedrooms and two Living rooms.
- Allowance for six ceiling speakers included.
- Provision for NBN services if available.
- Ceiling heights may vary.
- Internal carcasses to joinery shall be in melamine boarding.
- Exact models for appliances, fixtures and fittings subject to change; replacements to be of equal or better value.
- All furniture, curtains, light pendants, lamps and artwork depicted are excluded.
- Finishes and fixtures subject to change and availability.
- No curtains included.
- Televisions, Foxtel IQ units and all audio sound systems are not included.

ABOUT GIORGI

BESPOKE ARCHITECTURAL BUILDERS.

GIORGI IS ONE OF
AUSTRALIA'S MOST
AWARDED BUILDERS
OF CUSTOM LUXURY
RESIDENCES.

Our philosophy is to integrate architecture, interior design, landscaping design and construction with the aim of achieving unsurpassed quality from design to completion. This begins in the Giorgi in-house architect studio and flows through to meticulously detailed interiors and landscaping.

Recent awards include:

- 2014 HIA-CSR Australian Home of the Year (Hobbs Avenue, Dalkeith)
- 2014 HIA Australian Custom Built Home (Hobbs Avenue, Dalkeith)
- 2014 HIA Best Apartment Project (The Esplanade, South Perth)
- 2014 HIA Best Apartment (The Esplanade, South Perth)

Disclaimer: The information provided herein has been prepared with care however it is subject to change and cannot form part of any offer or contract. Whilst all reasonable care has been taken in preparing this information, the Seller or its representative or agent cannot be held responsible for any inaccuracies. Interested parties must be sure to undertake their own independent enquiries. All images/perspectives/photographs contained in this document are concept images and are for illustrative purposes only.

TEN
BELLEVUE

LUXURY RESIDENCES

TEN BELLEVUE TERRACE,
WEST PERTH, WESTERN AUSTRALIA.

architects &
builders

GIORGI